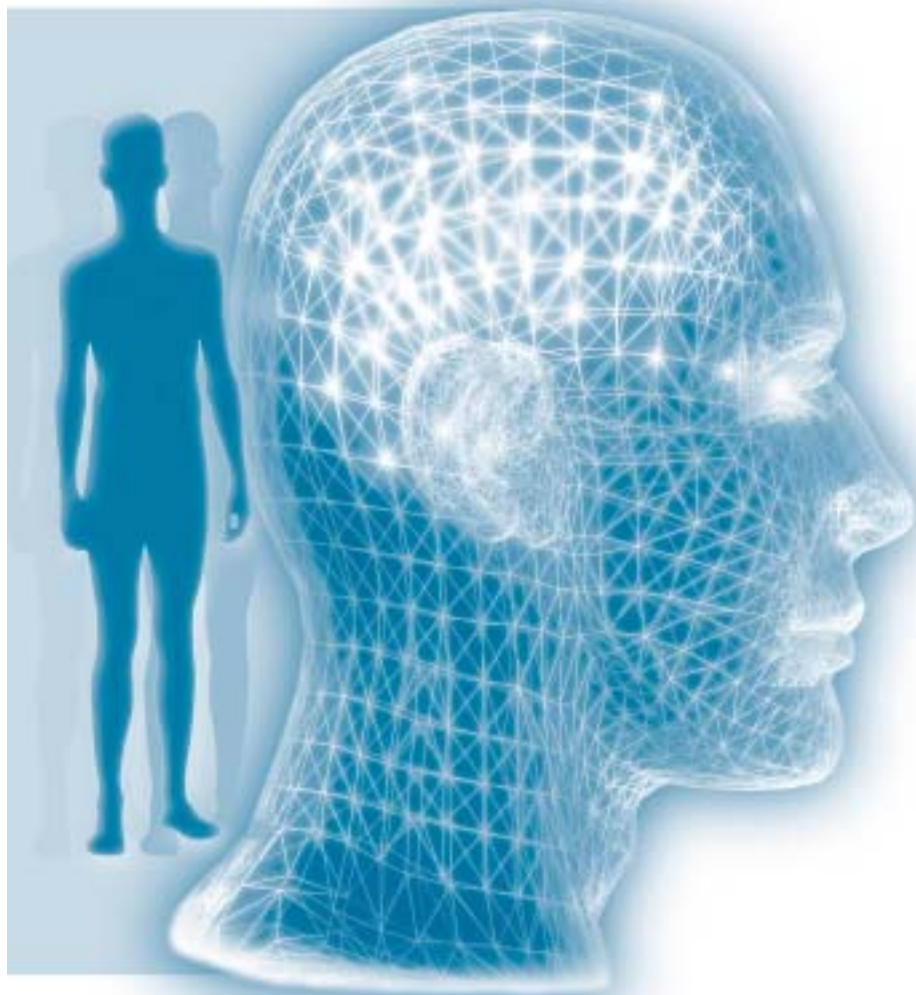
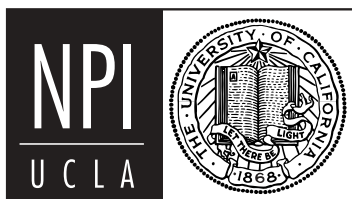


UCLA'S SEVENTH ANNUAL



Review of Psychiatry & Psychopharmacology Update

October 11-12, 2002
Skirball Cultural Center, Los Angeles, CA



Neuropsychiatric Institute · UCLA

Review of Psychiatry & Psychopharmacology Update

Course Description

Come to this year's Review and learn about the latest developments that will change the way you treat your patients. More than 30 lectures and small group sessions will emphasize the state-of-the-art in diagnosis and treatment of mental illness. One focus of this year's conference is the connection between mind and body in psychiatry and medicine. Special plenary and small-group sessions will emphasize how you can use both medications and psychotherapy for an integrated approach to patient care.

Speakers at this two-day conference will present the most important recent developments in the theory and practice of treatment. Special lectures will include approaches to mind-body interventions, biobehavioral treatment of eating disorders, development of affect regulation, treatment of fibromyalgia, as well as integrated approaches to sexual dysfunction.

Building on the success of last year's conference, Dr. Michael Gitlin again will chair the special one-day intensive psychopharmacology course that places an emphasis on the latest news in drug selection and medication management. Another highlight of this year's Review will be our luncheon plenary sessions. Dr. Park Dietz, one of the nation's leading forensic psychiatrists, will speak Friday on "The Forensic Evaluation of Andrea Yates." On Saturday, noted author Dr. Jeffrey Schwartz will discuss "The Mind and the Brain: Neuroplasticity and the Power of Mental Force."

You will receive an extensive syllabus including detailed lecture outlines and reference materials. In addition, this year for the first time you will receive a "digital resource library" containing key articles and other educational materials that you can access on CD in your computer.

I hope to see you at our Seventh Annual Review in October.

Andrew Leuchter, M.D.

Conference Chair

Professor, Department of Psychiatry and Biobehavioral Sciences

Director, Division of Adult Psychiatry

UCLA Neuropsychiatric Institute

Los Angeles, California

Skirball Cultural Center

This year's Review will be held at the Skirball Cultural Center in Brentwood. Nestled high in the Santa Monica Mountains, the Skirball Center contains a new state-of-the-art auditorium as well as small-group meeting rooms. A central courtyard and reflecting pool form an ideal venue for networking with colleagues, and relaxed interaction with faculty during the Friday evening reception. The Skirball is centrally located and is easily accessed from throughout the Los Angeles area, as well as from nearby hotels. There is ample free parking on site.

Planning Committee

Andrew F. Leuchter, M.D. (Chair)

Ian A. Cook, M.D.
Jennifer Danylyshyn
Pablo Davanzo, M.D.
Irene Goldenberg, Ed.D.
Colleen Hellige, R.N.
Victoria Hendrick, M.D.
Anand Kumar, M.D.

Stephen Marder, M.D.
Mary Mossman
Kelly Nielson
Keith Nuechterlein, Ph.D.
Charles Reynolds, Pharm.D.
Amy Sanders
Margaret Stuber, M.D.
Cheryl Teplinsky, M.S.W.
Donna Wirshing, M.D.

Unrestricted Educational Grants Were Received From:

Abbott Laboratories
Astra-Zeneca
Bristol-Myers Squibb
Cephalon Pharmaceuticals
Cyberonics
Eli Lilly and Company

Forest Pharmaceuticals, Inc.
GlaxoSmithKline
Janssen Pharmaceutica
Organon, Inc.
Pfizer, Inc.
Wyeth-Ayerst Laboratories

Accreditation

Category I Continuing Medical Education (CME)

This is an activity offered by the UCLA NPI&H, a CMA-accredited provider. Physicians and Psychologists attending this course may report up to 13 hours of Category I credits toward the CMA's Certificate in Continuing Medical Education and the AMA's Physician's Recognition Award.

Mandatory Continuing Education for Psychologists (MCEP)

Due to regulatory changes made by MCEP, psychologists will now receive CME certificates for their continuing education credit.



Social Workers and MFCCs/MFTs

NPI&H is an accredited provider for continuing education credits for LCSWs and MFCCs/ MFTs (provider number PCE378). This course meets the qualifications for 13 hours of continuing education credit as required by the California Board of Behavioral Sciences.

Board of Registered Nursing Contact Hours

NPI&H is an accredited provider for continuing education credits for nurses (provider number CEP381). This course meets the qualifications for 13 hours of credit as required by the Board of Registered Nursing.

Pharmacy Credit

The University of California, Los Angeles is approved by the American Council of Pharmaceutical Education as a provider of continuing pharmaceutical education. Universal Program Number 291-000-02-005-L01 for 13.0 contact hours, 13.0 CEUs. This activity was planned and produced in accordance with the Criterion and Standards of ACPE. In order to receive credit, participants must attend the entire activity. Certificate of attendance will be mailed within 5-6 weeks.

Course Outline

Friday, October 11, 2002

8:00 **Registration, Breakfast, and Exhibits**

8:30 **Welcome**

Andrew F. Leuchter, M.D.

8:45 **Mind-Body Interventions: Implications for Psychiatry and Medicine**

Michael Irwin, M.D.

9:30 **Biobehavioral Treatment of Eating Disorders**

Michael Strober, Ph.D.

10:15 **Break and Exhibits**

10:45 **The Development of Affect Regulation in Personality Disorders**

Mark Thompson, M.D.

11:30 **Treatment of Fibromyalgia**

Andrew F. Leuchter, M.D.

12:15 **Luncheon Plenary**

The Forensic Evaluation of Andrea Yates

Park Dietz, M.D., M.P.H., Ph.D.

1:30 **Small Group Sessions**

1. Side Effects of Antipsychotics and Physical Health

Donna Wirshing, M.D.

2. Current Issues and Controversies in ECT

Randall Espinoza, M.D.

3. SAME, Methylation, and Mood Disorders

Bruce Kagan, M.D.

4. Clinical Markers of Change in Dynamic Therapy

Mark Thompson, M.D.

5. HIV-Related Psychiatric Illness

John Williams, M.D.

6. Chinese Medicine and the Mind/Body Concept

Ka Kit Hui, M.D.

2:30 **Break and Exhibits**

3:00 **Small Group Sessions**

7. Psychotropic Medications in Chronic and Cancer Pain

Thomas Strouse, M.D.

**8. Cognitive Behavioral Treatment of OCD
and Tourette Disorder in Children**

John Piacentini, Ph.D.

9. Depression and Cardiovascular Disease

Ian A. Cook, M.D.

10. "Psychache" vs. Depression: Descartes' Erratum

Edwin Shneidman, Ph.D.

11. Assessment and Treatment of Sleep Disorders

Frisca Yan-Go, M.D.

4:00 **Reception**

Course Outline

Saturday, October 12, 2002

Our Saturday program consists of Small Group sessions and Psychopharmacology Update sessions. Please select in advance which session you would like to attend at each time, and indicate your choice on the enrollment form. You can attend a combination of Small Group and Psychopharmacology Update sessions throughout the course of the day.

8:00 Registration, Breakfast and Exhibits

8:30 Psychopharmacology Update

12. New Treatment Approaches to SSRI-Induced Sexual Side Effects
H. George Nurnberg, M.D.

Small Group Sessions

13. Couples Therapy I: The Eight Different Couples Therapies
Walter Brackelmanns, M.D.

14. Eight Steps to Optimizing Family Functioning
David Feinberg, M.D., M.B.A.

9:30 Psychopharmacology Update

15. New Perspectives on Drug Dependence and Treatment
Thomas Newton, M.D.

Small Group Sessions

16. Couples Therapy II: Separation, Divorce, and Remarriage Therapy
Walter Brackelmanns, M.D.

17. Adolescent Substance Abuse
David Feinberg, M.D., M.B.A.

10:30 Break and Exhibits

11:00 Psychopharmacology Update

18. Practical Update on Newer Antipsychotics
Stephen Marder, M.D.

Small Group Sessions

19. The Neurobiology of "Gut Feelings"
Emeran Mayer, M.D.

20. Grief and Grief Resolution
David Wellisch, Ph.D.

12:00 Luncheon Plenary

The Mind and The Brain: Neuroplasticity and the Power of Mental Force
Jeffrey M. Schwartz, M.D.



Review of Psychiatry & Psychopharmacology Update

- 1:15 Psychopharmacology Update**
- 21. Seasonal Affective Disorder**
Alfred J. Lewy, M.D., Ph.D.
- Small Group Sessions**
- 22. Models of Sex Therapy**
Aaron Hass, Ph.D.
- 23. Stressful Life Events in Children**
Daniel A. Kupper, Ph.D.
- 2:15 Psychopharmacology Update**
- 24. New Research in Perinatal Psychiatry**
Victoria Hendrick, M.D.
- Small Group Sessions**
- 25. Introduction to Dialectical Behavior Treatment of Borderline Personality Disorder**
Paula Stoessel, Ph.D.
- 26. Advances in the Treatment of Autism**
Betty Jo Freeman, Ph.D.
- 3:15 Break and Exhibits**
- 3:30 Psychopharmacology Update**
- 27. Mood Myths and Contrary Realities**
Michael Gitlin, M.D.
- Small Group Sessions**
- 28. Agitation in Dementia: Integrating Medication and Situational Approaches**
Stephen Read, M.D.
- 29. Adolescent Self-Mutilation**
Mark DeAntonio, M.D.
- 4:30 Adjournment**

Guest Faculty

Alfred J. Lewy, M.D., Ph.D.

Professor and Vice Chair,
Department of Psychiatry
Oregon Health & Science University

H. George Nurnberg, M.D.

Professor and Executive Vice Chair
Department of Psychiatry
The University of New Mexico -
Health Sciences Center -School of Medicine

UCLA Faculty

Walter E. Brackelmanns, M.D.

Associate Clinical Professor, Department of
Psychiatry and Biobehavioral Sciences

Ian A. Cook, M.D.

Assistant Professor, Department of Psychiatry
and Biobehavioral Sciences

Mark De Antonio, M.D.

Associate Clinical Professor, Department of
Psychiatry and Biobehavioral Sciences
Director, Adolescent Inpatient Service

Park Dietz, M.D., M.P.H., Ph.D.

Clinical Professor, Department of Psychiatry
and Biobehavioral Sciences

Randall Espinoza, M.D., M.P.H.

Assistant Clinical Professor, Department of
Psychiatry and Biobehavioral Sciences
Director, Inpatient Geriatric Psychiatry
and ECT Program

David Feinberg, M.D., M.B.A.

Medical Director, UCLA Neuropsychiatric &
Behavioral Health Services
Associate Professor of Clinical Psychiatry,
Department of Psychiatry and
Biobehavioral Sciences

Betty Jo Freeman, Ph.D.

Professor, Department of Psychiatry and
Biobehavioral Sciences

Michael Gitlin, M.D.

Professor of Clinical Psychiatry, Department of
Psychiatry and Biobehavioral Sciences
Director, Mood Disorders Clinic

Aaron Hass, Ph.D.

Assistant Clinical Professor, Department of
Psychiatry and Biobehavioral Sciences
Professor of Psychology
California State University, Dominguez Hills

Victoria Hendrick, M.D.

Assistant Professor, Department of Psychiatry
and Biobehavioral Sciences
Director, Women's Mood Disorders
Research Program

Ka Kit Hui, M.D.

Director, UCLA Center for East-West Medicine
Co-Director, UCLA Center for Integrative Medicine
Professor, Department of Psychiatry and
Biobehavioral Sciences

Michael Irwin, M.D.

Norman Cousins Professor, Department of Psychiatry and Biobehavioral Sciences
Director, Psychoneuroimmunology Center

Bruce Kagan, M.D., Ph.D.

Professor, Department of Psychiatry and Biobehavioral Sciences

Daniel A. Kupper, Ph.D.

Assistant Clinical Professor, Department of Psychiatry and Biobehavioral Sciences

Andrew F. Leuchter, M.D.

Professor, Department of Psychiatry and Biobehavioral Sciences
Director, Division of Adult Psychiatry
Chief of Staff, UCLA Neuropsychiatric Hospital

Stephen Marder, M.D.

Professor and Vice Chair, UCLA Department of Psychiatry and Biobehavioral Sciences
Chair, Department of Psychiatry; Director, MIRECC
West LA Veterans Administration Medical Center

Emeran A. Mayer, M.D.

Professor, Departments of Medicine, Physiology and Psychiatry & Biobehavioral Sciences
Chair, UCLA Center for Integrative Medicine

Thomas Newton, M.D.

Associate Professor, Department of Psychiatry and Biobehavioral Sciences
Medical Director, Substance Abuse Program

John Piacentini, Ph.D.

Associate Professor, Department of Psychiatry and Biobehavioral Sciences
Director, Child OCD, Anxiety, & Tic Disorders Program

Stephen Read, M.D.

Associate Clinical Professor, Department of Psychiatry and Biobehavioral Sciences
Greater Los Angeles Veterans Healthcare System

Edwin S. Shneidman, Ph.D.

Professor Emeritus, Department of Psychiatry and Biobehavioral Sciences

Jeffrey M. Schwartz, M.D.

Research Psychiatrist, Department of Psychiatry and Biobehavioral Sciences

Paula Stoessel, Ph.D.

Associate Professor, Department of Psychiatry and Biobehavioral Sciences

Michael Strober, Ph.D.

Professor, Department of Psychiatry and Biobehavioral Sciences
Director, Eating Disorders Program
Director, Adolescent Mood Disorders Program

Thomas B. Strouse, M.D.

Director, Psychosocial Services and Cancer Pain Management Program
Cedars-Sinai Comprehensive Cancer Center
Assistant Clinical Professor, Department of Psychiatry and Biobehavioral Sciences

Mark Thompson, M.D.

Assistant Clinical Professor, Department of Psychiatry and Biobehavioral Sciences
Director, Los Angeles Psychoanalytic Institute

David Wellisch, Ph.D.

Professor, Department of Psychiatry and Biobehavioral Sciences

John K. Williams, M.D.

Assistant Research Psychiatrist, Department of Psychiatry and Biobehavioral Sciences

Donna Wirshing, M.D.

Associate Professor, Department of Psychiatry and Biobehavioral Sciences
Co-Chief, Schizophrenia Treatment Unit
West LA Veterans Administration Medical Center

Frisca Yan-Go, M.D.

Clinical Professor, Department of Neurology
Medical Director, UCLA Sleep Disorders Center

General Information

Dates: Friday and Saturday
October 11 and 12, 2002

Location: Skirball Cultural Center
2701 N. Sepulveda Blvd.
Los Angeles, California

Directions:

The Skirball Cultural Center is located in the Sepulveda Pass, just off the 405 Freeway on North Sepulveda Boulevard near Mulholland Drive.

From the 405 Freeway, exit on Mulholland Drive. Turn right on Skirball Center Drive and right on North Sepulveda Boulevard. Turn left into the North parking lot at Herscher Way. Parking is free of charge. All course registrants will be mailed a detailed map.

Accommodations:

A list of nearby hotels is available upon request.

Course Fee:

Early registration must be postmarked by September 13, 2002.

Psychiatrists and other physicians, psychologists, PharmDs

	Early	Late
UC Faculty	\$295	\$335
Non-UC	\$330	\$370

Nurses, Social Workers, and MFCCs

	Early	Late
UC Faculty	\$265	\$305
Non-UC	\$285	\$325

One-day fees are available. Call (310) 825-4781.

Enrollment

By Mail:

Use the form attached. For additional applications, use photocopies or separate sheets giving all the information requested on the form.

Make Checks Payable to: Regents of the University of California

By Phone:

Use your MasterCard, VISA, American Express, or Discover Card by calling (310) 825-4781.

By Fax:

Send the complete enrollment form with charge card information and authorizing signature to (310) 825-7642.

Online:

Register and pay online at <http://www.annualreview.com>.

Refund Policy:

A service charge of \$50 is withheld from all refunds (refund in full if the conference is cancelled, discontinued, or rescheduled). Refund requests must be in writing and post-marked or faxed no later than October 1, 2002. Refunds are not issued for persons who register but do not attend, unless a written request has been approved.

For Additional Information:

Contact Amy Sanders at (310) 825-4781 or amy@mentalhealth.ucla.edu

Review of Psychiatry
 & Psychopharmacology Update
 October 11-12, 2002

Enrollment Form (Please print clearly)

Name (First, Middle, Last) _____

Degree(s) _____

License Number _____

Field of Practice _____ UC Faculty Appointment _____

Organization/Affiliation _____

Mailing Address Home Office _____

City/State/Zip _____ Daytime Phone Number _____

E-mail Address _____

Please rank three Small Group Session choices for Friday, October 11:

1:30 p.m. (1-6) ___ ___ ___ 3:00 p.m. (7-11) ___ ___ ___

Please rank your choices for Small Group or Psychopharmacology Update Session by order of preference for Saturday, October 12:

8:30 a.m. (12-14) ___ ___ ___ 9:30 a.m. (15-17) ___ ___ ___

11:00 a.m. (18-20) ___ ___ ___ 1:15 p.m. (21-23) ___ ___ ___

2:15 p.m. (24-26) ___ ___ ___ 3:45 p.m. (27-29) ___ ___ ___

We will make every effort to honor your preferences, but we cannot guarantee which sessions you will be assigned to due to limited seating capacity.

Amount Paid: _____

Indicate Payment Method:

- Check enclosed (payable to **Regents of the University of California**)
- MasterCard VISA American Express Discover

Card Number: _____ Expiration Date: _____

Signature: _____

Send to: UCLA's Seventh Annual Review of Psychiatry

UCLA Neuropsychiatric Institute
 760 Westwood Plaza, 37-442
 Box 951759
 Los Angeles, California 90095-1759

(310) 825-4781
 (310) 825-7642 fax — credit card only